



S.E.T. Dispensing components

SAN-EI TECH

www.san-ei-tech.co.jp/eng

Dispensing Solutions

Features & Benefits of S.E.T. components

★ Syringe

- Higher transparency
- Zero taper barrel enhances smooth piston travel from top to bottom
- Superior accuracy tolerance in molding
- No inclusions (such as black specks)

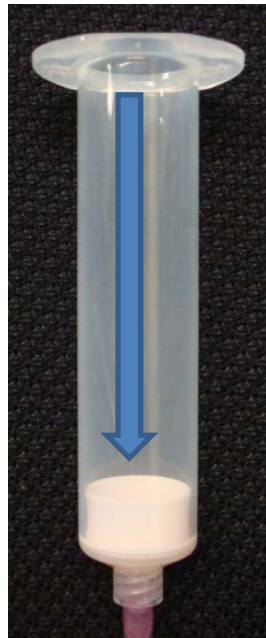


Features & Benefits of S.E.T. components

★ Piston

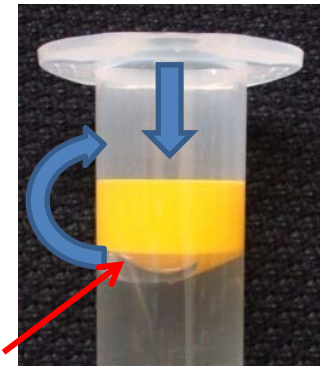
- Tight-fit Double Wiping piston and Loose-fitting Flat Wall piston

[Double Wiping piston]



- ★ Tight-fit piston allowing the material totally being wiped out, which is economically efficient

[Flat Wall piston]



- ★ Loose-fitting piston capable of diverting air trapped in the material through the gap between the fitting surfaces, which can solve the air void problem

Features & Benefits of S.E.T. components

★ End cap

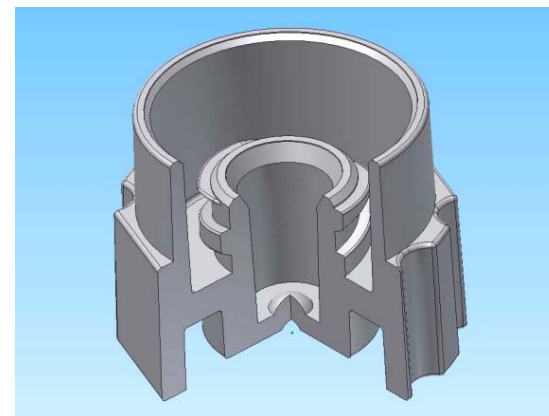
- Unique snap-on design simplifies attachment
- Both hooks ensure safe attachment, keeping it from coming off even affected by changes of pressure during overseas transportation



Features & Benefits of S.E.T. components

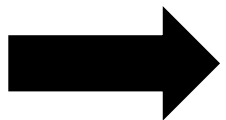
★ Tip cap

- Tip cap can be attached easily to the syringe
- Thread-screwed internal profile ensures fitting
- Unique PP design enhances durability against drop impact

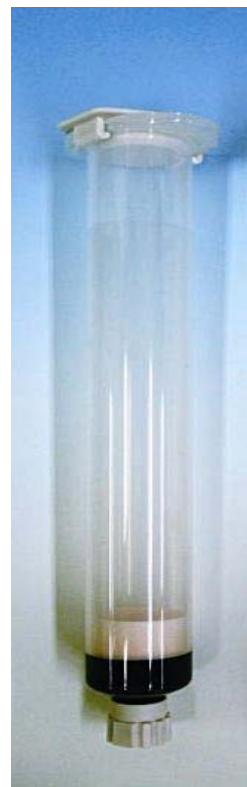


Remaining residue performance

S.E.T.



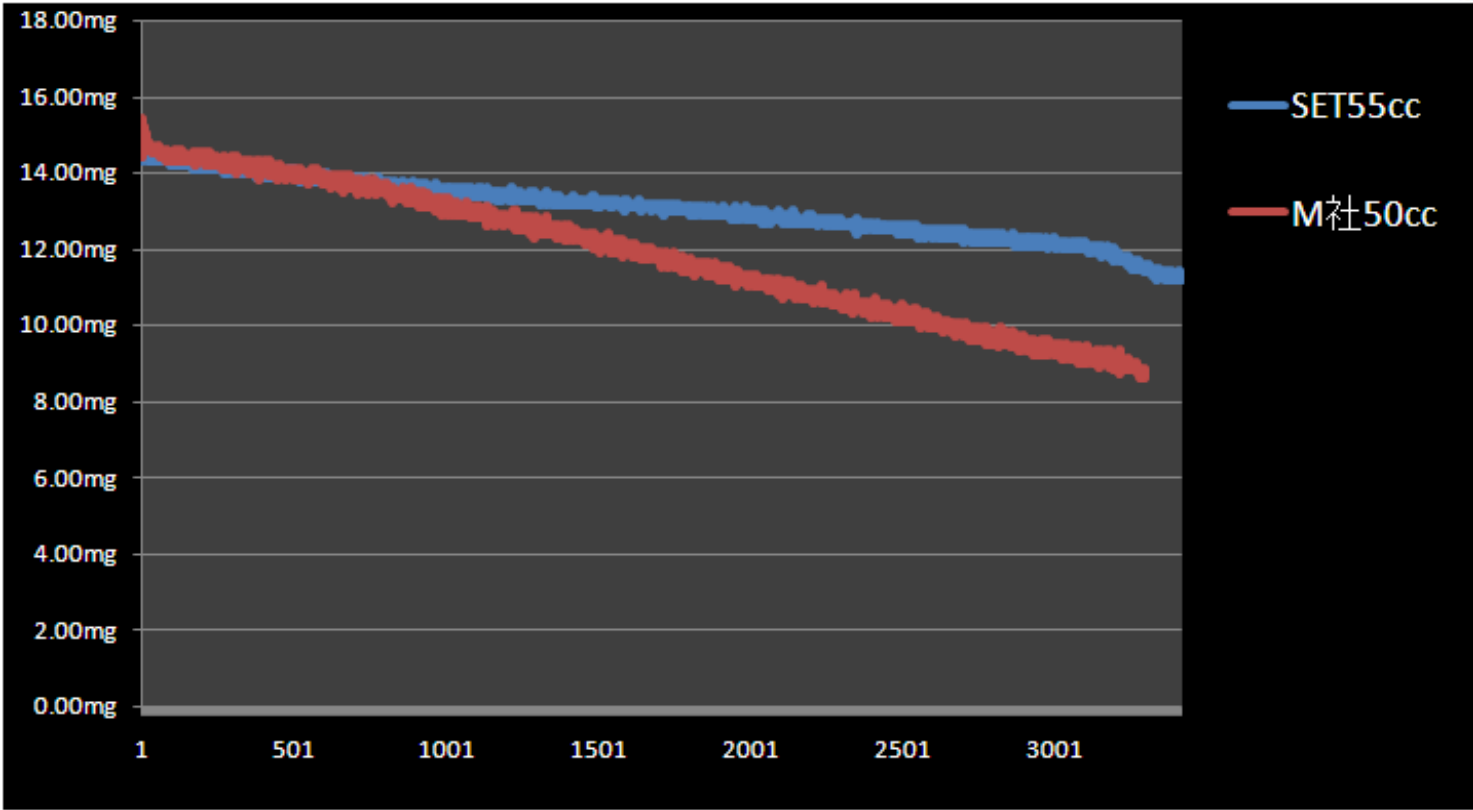
Competitor
"M"



Less residue !
Much better visual recognition !



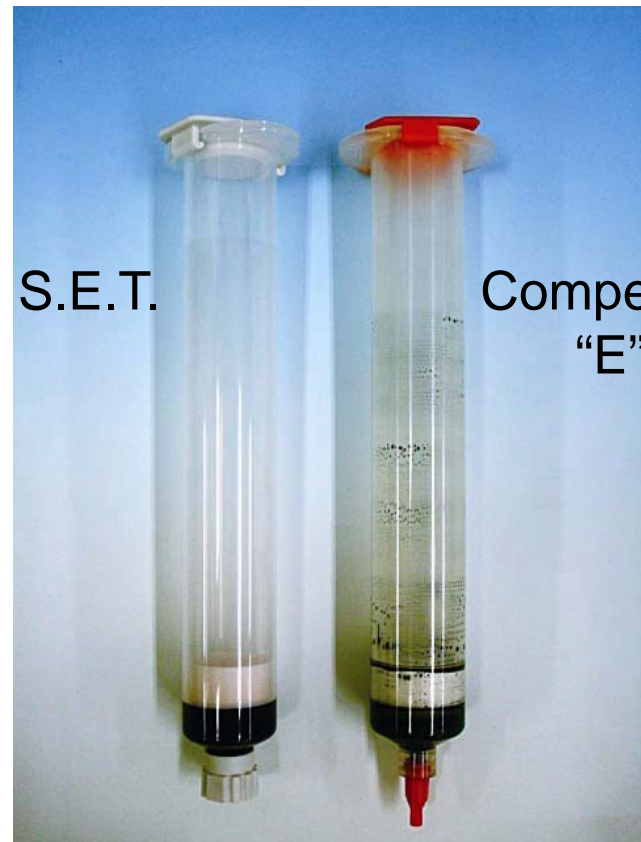
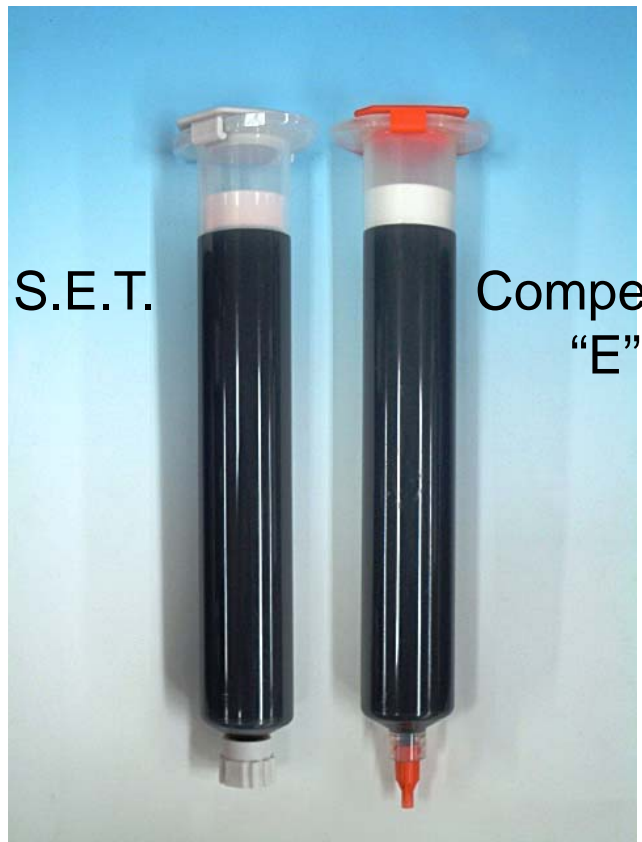
Superior dot to dot consistency



Fluid: Silicon oil
Nozzle: metal nozzle 15G
Pressure: 0.03MPa
Vacuum: 0.8KPa (only for M)

Remaining residue performance

【High viscosity epoxy : 50Pa·s】



Shattering strength at -40°C

Drop durability of the syringes (S.E.T. and Competitor "E") with material pre-filled in a frozen state at -40°C to be inspected (n=5)

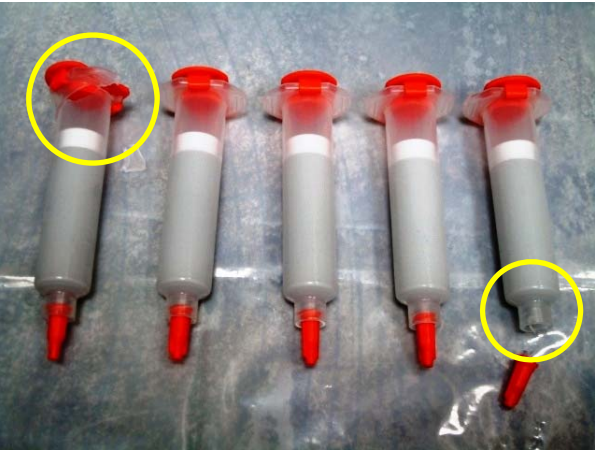
[SET]

10cc

No syringes were failed
(0%)



[Competitor "E"]



2 of 5 were failed
(40%)

Shattering strength at -40°C

[SET]

[Competitor "E"]

30cc

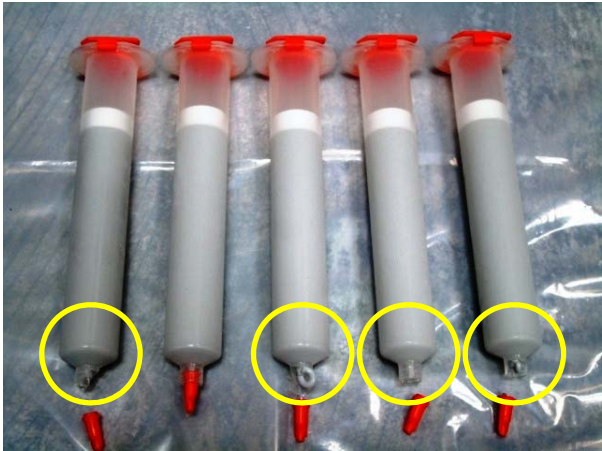
No syringes were failed (0%)



3 of 5 were failed (60%)

55cc

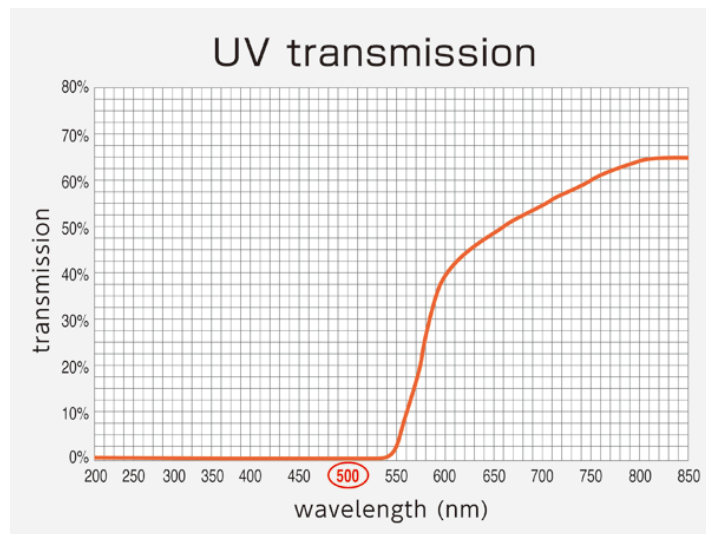
2 of 5 were failed (40%)



4 of 5 were failed (80%)

SET UV Syringe

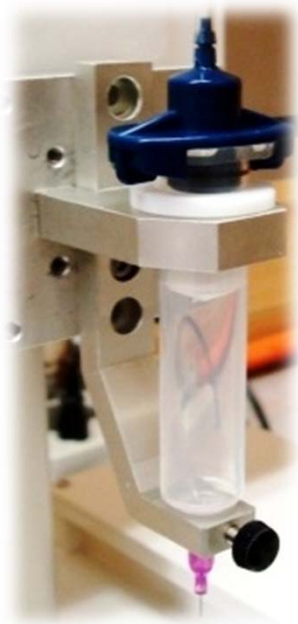
- Unique polypropylene polymer blocks UV and Visible light up to 500nm
- No chemical additives included, which leads contamination-free dispensing
- Remaining fluid level can clearly be detected through the wall



Versatility

Following S.E.T. components are almost compatible with Competitor “E” and no necessary to change the current parameters or conditions

Syringe holder



Attachment



Needle nozzle



Dispensing parameter (pressure, dispense time, etc)



Syringe adapter



Our Values – S.E.T. Dispensing components

Benefits to end-users:

- Very versatile
- No need to change parameters
- Dispensing accuracy and quality can be improved





SAN-EI TECH_{LTD.}

Japan, China, Singapore

www.san-ei-tech.co.jp/eng